

# St. Cuthbert's Catholic Primary School, Grindon



## Prospectus 2025/26



Bishop Chadwick  
Catholic Education Trust

I feel very blessed to be the Headteacher of such a wonderful school, full of happy, well-behaved children who are a pleasure to teach and a delight to work with. All of the staff at our school work very hard to make lessons engaging and to help each child learn in every lesson. As a result, our pupils are keen to learn and they feel proud of their success in all areas of the curriculum. St. Cuthbert's is no ordinary school.

We do our utmost to make every child and adult feel that they are an important part of our school and special in the sight of God. Our staff create exciting lessons and we offer many extra curricular activities. Most importantly, we have fun teaching and learning. We welcome children of all faiths and beliefs.

It is all the many little things that add together to make our school feel so good – the welcome from staff and pupils, the cheerfulness of everyone here, the encouragement we give and get, the enormous interest shown in every opportunity offered. Why not visit us for real and find out what we mean. If you require any further information, please contact the school.

Warmest wishes





# Our Nursery



Our nursery provides both 15 and 30 hour places from 3 years old.

We value our strong partnership with families, ensuring that every child's needs are understood and catered for. If you would like to organise a visit please contact the school office.



The 30 hour offer means that your child's session would finish at 2.30 pm each day. You do have the option to purchase an additional hour each day to keep in line with the school finish time of 3.30 pm and the vast majority of parents choose to do this.

We keep this cost well below normal childcare costs and this provides excellent value for money. You also have the option to purchase a school meal which is a great way for your children to develop those vital social interaction skills.'

It is an additional £20 per week for the additional 5 hours (to keep your child's sessions in line with the school day). The cost for a school meal for the week is £12.50. So if you selected both options the total cost would be £32.50 per week.



# Our School Day



## Reception

Morning session 8.45 am -11.45 am

Afternoon session 12.45 pm -3.15 pm

## Year 1 and Year 2

Morning session 8.45 am- 12.00 pm

Afternoon session 1.00 pm - 3.25 pm

## Year's 3, 4, 5 and 6

Morning session 8.45 am -12.00 noon

Afternoon session 1.00 pm - 3.15 pm

**School is open from 8.30am, children are expected to be in school, sitting in their place and ready to begin work at 8.45 am.**

## Wraparound Care

School operates a breakfast club (7.30 - 8.30 am) and After School Teatime club (3.15 - 5.30pm Monday - Thursday). Places are limited and must be booked in advance by contacting the school office.





## Educate; Create; Witness; Christ at the Centre

We strongly believe that children leaving our school must be well equipped for the future. We aim to honour and maintain the vision and ideals of the founders of our school, who, inspired by their love of Christ, established in the community a centre of learning based upon the teachings of Christ. We aim to educate each other, create community and witness to Christian values.

EVERY CHILD MATTERS, EVERY ADULT MATTERS, EVERYONE MATTERS, GOD MATTERS



### Our School Prayer

This is our school  
Let Peace live here  
Let the room be full of happiness  
Let love be all around  
Love of one another  
Love of all peoples  
Love of life itself  
And love of God  
Let us remember  
That as many hands build a house  
So many hearts make a school.  
**Amen**

# Our Curriculum



**At St. Cuthbert's we aim to provide a broad and balanced curriculum for all our children including the most able and those with special educational needs. This curriculum is based on the National Curriculum and covers the following subjects;**

- English
- Maths
- Religious Education
- Science
- Computing
- History
- Geography
- Physical Education
- Music
- Art
- Design Technology
- Spanish
- Personal Social and Health Education (P.S.H.E) including RSE (Relationships and Sex Education)

All classes from Year 1 are taught these subjects. Our Nursery and Reception class follow the Foundation Stage curriculum, which prepares the children for the National Curriculum which starts in Year 1. At the start of every term parents will be informed about the curriculum to be followed in their child's class and we hope that you will be able to offer help and support to your child by discussing the themes with them





# Our Uniform



**We expect all our children to wear school uniform and ask all parents to support us in ensuring that children come to school dressed appropriately.**

## **Boys:**

- Grey trousers/ grey shorts in the summer if desired.
- Light blue polo shirt.
- Navy sweatshirt/cardigan (with embroidered logo if desired although this is not necessary).
- Black school shoes or black trainers.

## **Girls:**

- Grey skirt/pinafore dress/ grey trousers/grey shorts in the summer if desired.
- Light blue polo shirt.
- Navy sweatshirt/cardigan (with embroidered logo if desired, although this is not necessary).
- Summer- blue/white checked dress.
- Black school shoes/ trainers or black or white flat sandals in the summer if desired.

## **P.E. Kit:**

- White/Black- trainers
- A white cotton T-shirt.
- Navy shorts/Black Shorts
- Navy /black jogging bottoms or leggings

**Children will be given their designated days for P.E. and are expected to come in dressed in their P.E. kit on these days.**

**Preloved uniform is available please contact the school office.**



Safeguarding is paramount and our Headteacher and Deputy are Designated Safeguarding Officers. All school staff have undertaken training in safeguarding and child protection.

As a school we work closely with Sunderland City Council and Clennell Education Solutions Safeguarding teams. We follow the guidance of 'Keeping Children Safe in Education'. We regularly update our safeguarding procedures ensuring our school is a safe and secure environment for all. All staff are DBS checked before they can work in school.



## SEND

we aim to cater for the individual needs of all children. Some children may need the provision of additional resources, adapted materials or extra learning support, to ensure they can access the curriculum and reach their potential.

We work in partnership with families and outside agencies, e.g. Educational Psychologists, Speech & Language Therapists, Paediatrician Consultants, Behaviour Specialists etc. To ensure a holistic approach.

We have a SENCO in school and parent/carers feedback is always welcome.





**CHADWICK'S  
KITCHEN**

**Our award winning in-house catering team Chadwick's Kitchen, provide catering services across the Trust.**

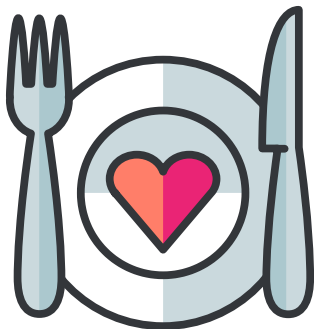
We use fresh ingredients to prepare healthy and nutritionally balanced meals each day. The majority of our menus are homemade by our chefs in our kitchens.

Staff are trained to accommodate medical diets and work in partnership with parents to ensure these needs are met. As part of the Trust's commitment to sustainability, we regularly review food miles and continue to work to reduce food waste.

Parents/Carers can pay for school meals using ParentPay.

Pupils entitled to free meals are allowed to purchase food to the value of a free school meal allowance daily.

Pupils also have the option to bring a packed lunch (nuts or nut-based products aren't permitted). Find out more:  
[www.bccet.org.uk/chadwicks-kitchen/](http://www.bccet.org.uk/chadwicks-kitchen/)



# Our Trust



**We are proud to be part of Bishop Chadwick Catholic Education Trust.**

We are a catholic multi-academy Trust and currently have thirty schools, five secondary schools (four with sixth forms), and twenty five primary schools (16 have nursery provision).

The Trust covers the east part of the Diocese of Hexham and Newcastle, we have schools in East Durham, South Tyneside and Sunderland.

Our family of schools work closely together so that can pupils can flourish. As part of the Trust effective transition is supported by our close relationships, and pupils benefit from a shared, progressive curriculum and common expectations.

Find out more: [www.bccet.org.uk](http://www.bccet.org.uk)



We have 30 schools  
in our Trust

11,495 pupils in our  
family of schools

1,338 staff in our  
Trust



@BishopChadwickCET



**Bishop Chadwick**  
Catholic Education Trust





St. Cuthbert's Catholic  
Primary School  
Grindon  
SR4 8HP

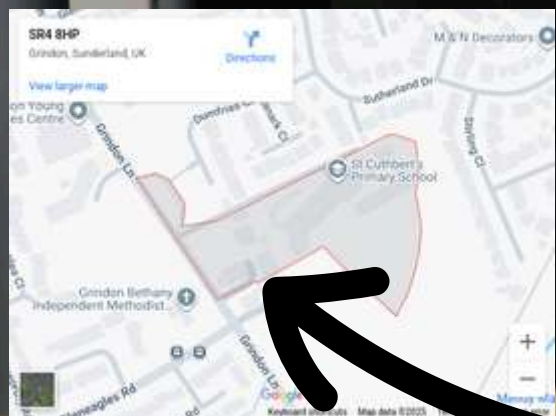
# Get in touch

☎ 0191 528 5094

🌐 [www.stcuthbertsprimaryschool.co.uk](http://www.stcuthbertsprimaryschool.co.uk)

@ [office@stcuthbertsprimaryschool.co.uk](mailto:office@stcuthbertsprimaryschool.co.uk)

📘 @StCuthbertsCatholicPrimaryGrindon



**WE ARE  
HERE**